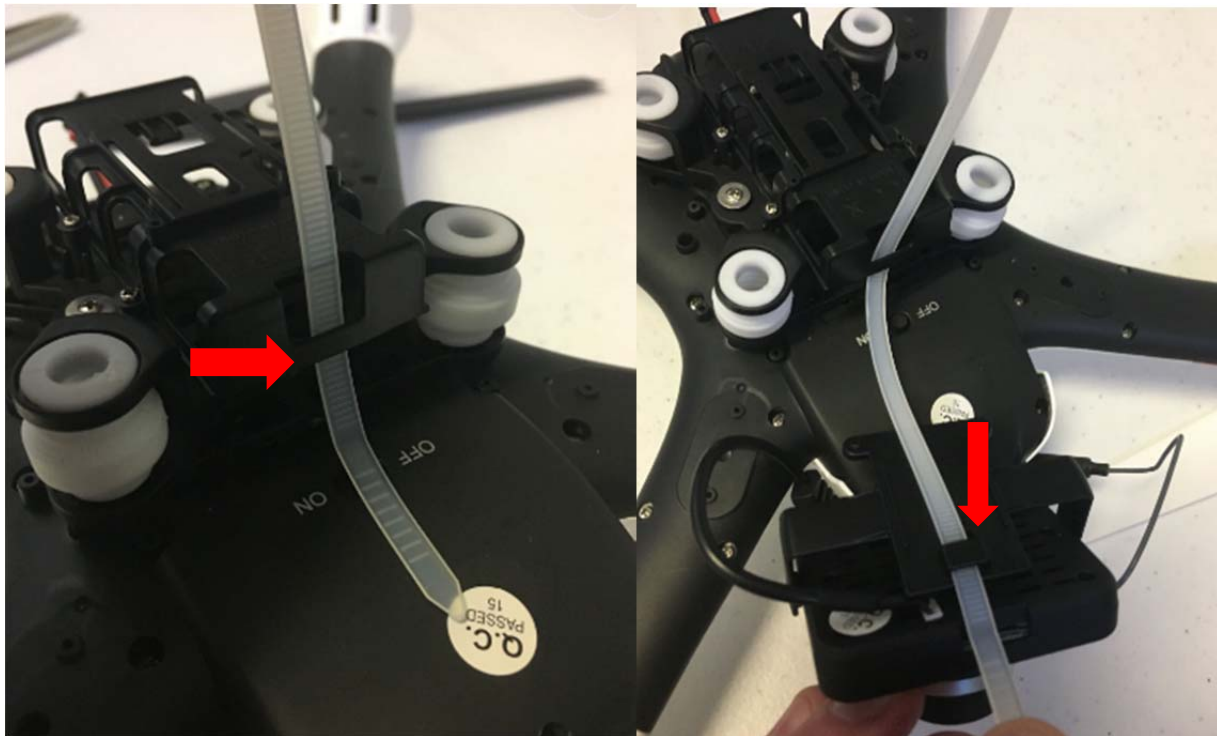
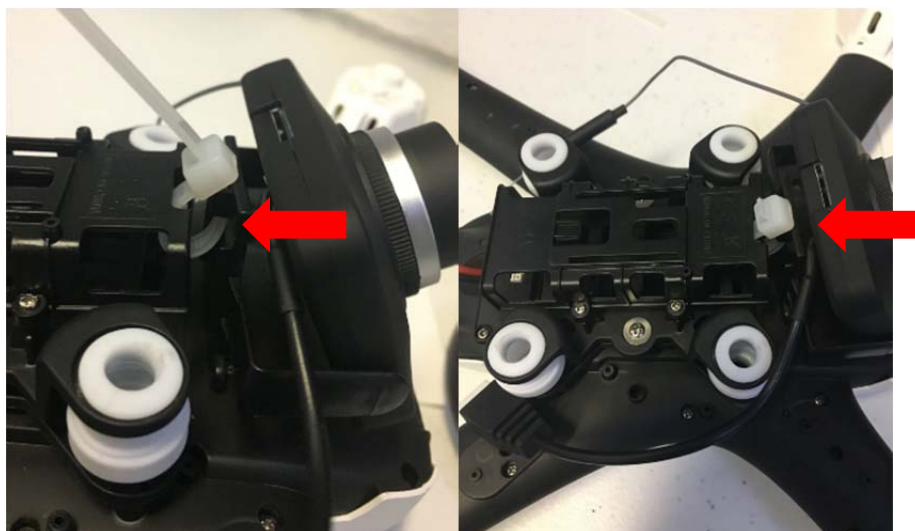


For a Quick Start Guide go to our website to watch our tutorial videos for tips to be flying in minutes!

Step 1. Feed the Zip tie through the opening on the front of the battery tray near the on/off switch. Then Feed the zip tie through the opening on the Camera bracket



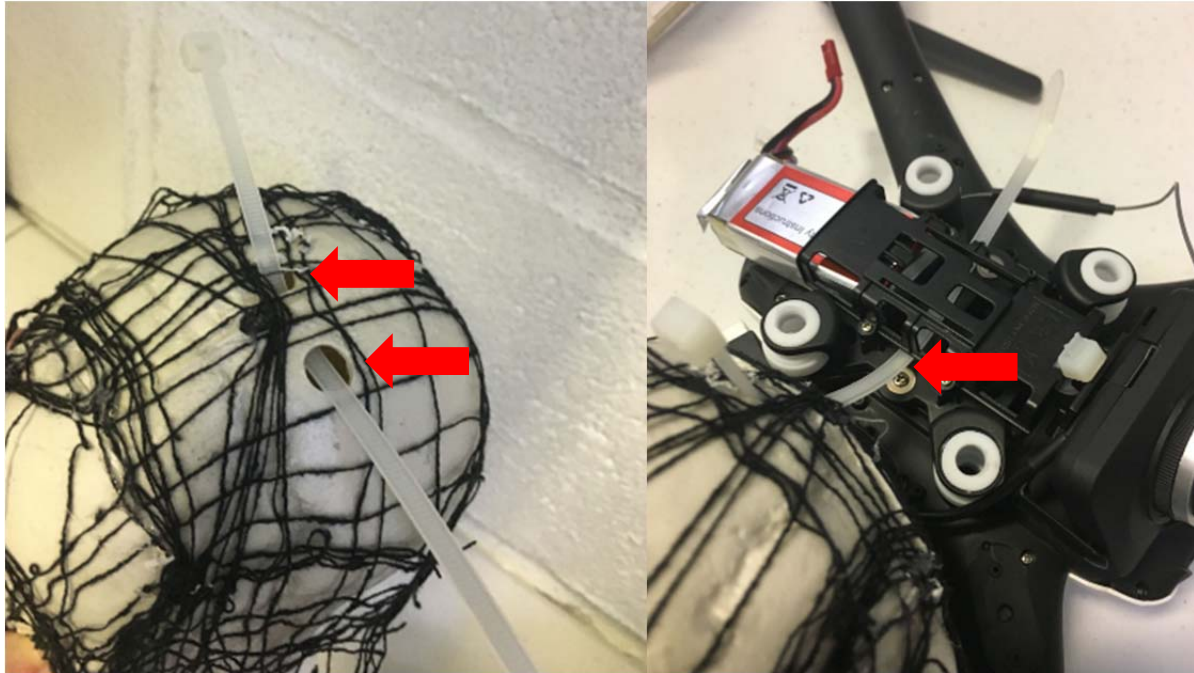
Step 2. Pull the zip tie tight to secure the camera and use a scissors to cut the excess zip tie.



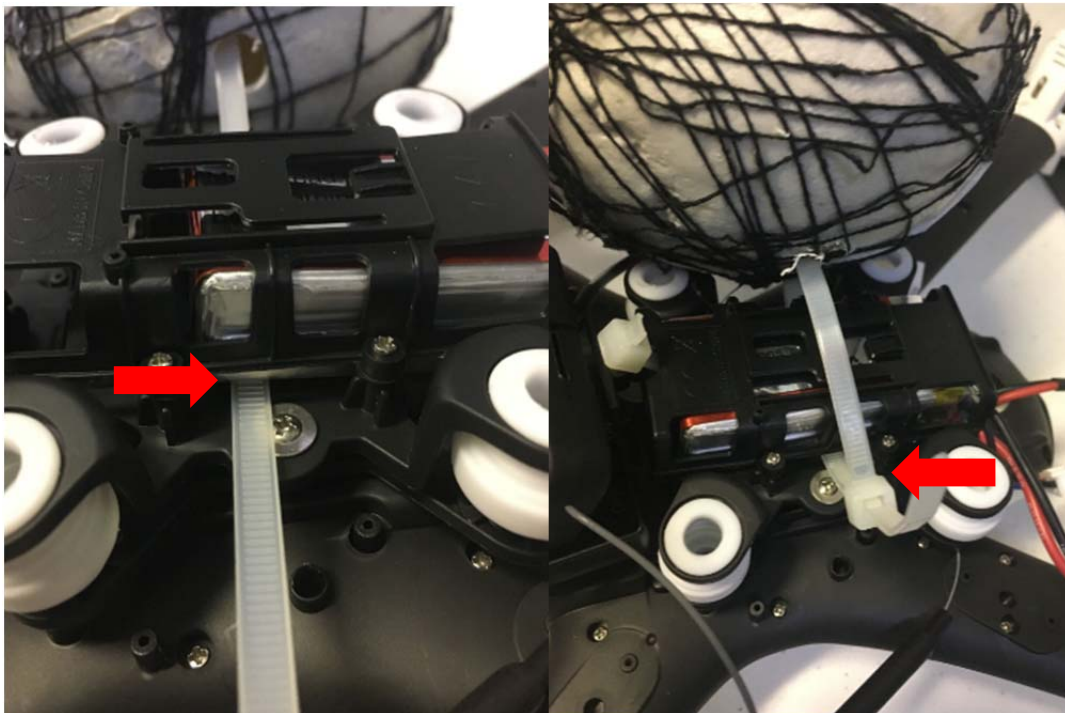
**** Any Problems? Call us 1-888-730-9880**

**** Any Problems? Call us 1-888-730-9880**

Step 3. Feed the Zip tie through the two holes in the skull then feed the end of the zip tie in between the battery bracket and the stabilizer frame.

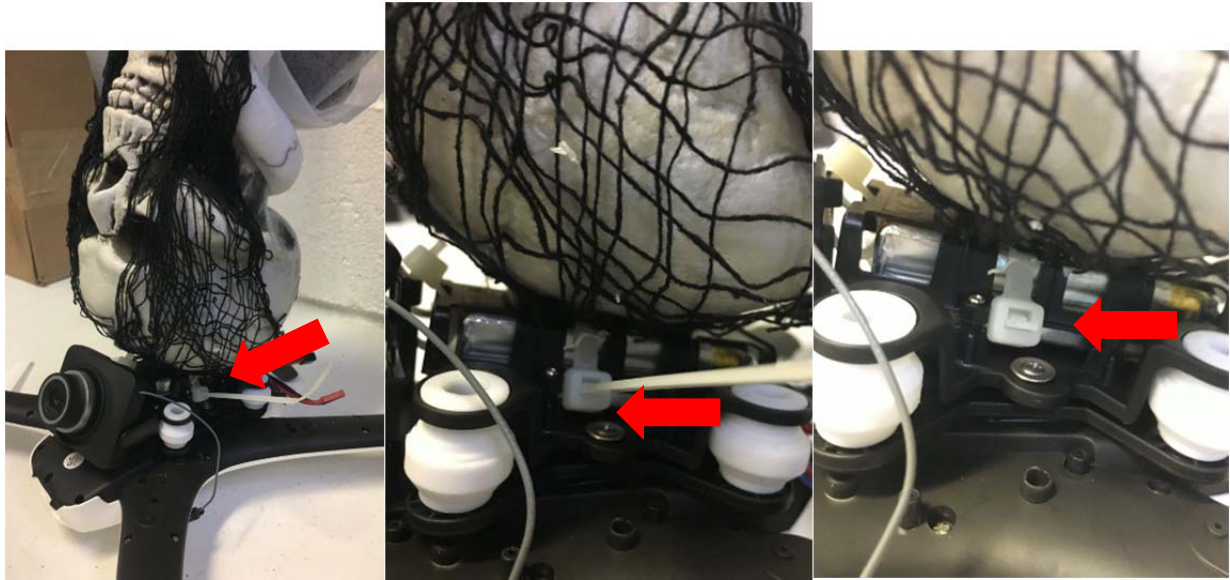


Step 4. Insert the fully charged battery into the battery bracket and slide the battery over and passed the zip tie. Connect the two ends of the zip tie.

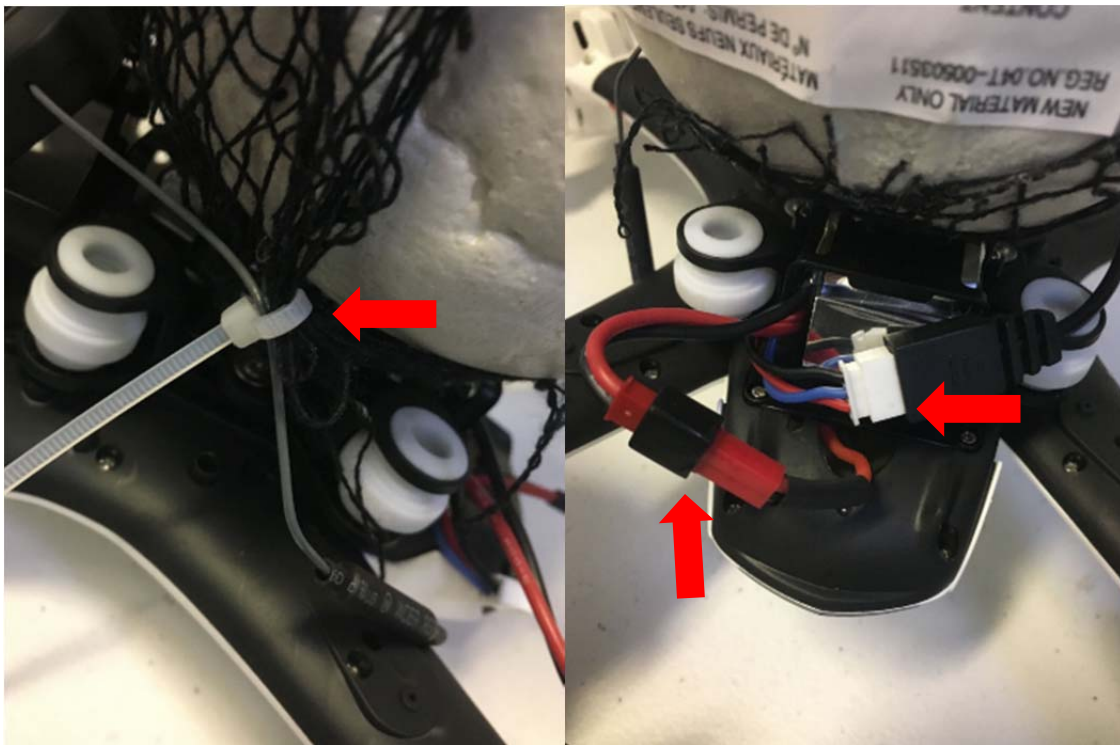


**** Any Problems? Call us 1-888-730-9880**

Step 5. Pull the zip tie tight to secure the ghost head and use a scissors to cut the excess zip tie.



Step 6. Use the small zip tie to secure the FPV camera antenna to the side of the ghost's head on the fabric. Then plug in the battery.



**** Any Problems? Call us 1-888-730-9880**

**Step 7. The Ghost will now look like this, unravel the white fabric.
Bend the wire arms into position to complete the look!**



facebook

**Post your pics and
video & tag us on
Facebook to win
free gear!!!**

@buywondertech

#ghostdrone



**** Any Problems? Call us 1-888-730-9880**

For a Quick Start Guide go to our website to watch our tutorial videos for tips to be flying in minutes!

CONNECT THE REMOTE CONTROL TO THE DRONE:

To connect the remote control to the drone make sure both of the orange sliders on each side of the remote are moved down to the "L" position. Also press the "AILE/RUDD" button until the LCD Screen says "STICK MOD 2" It is also recommended to press the "Beginner/Intermediate/Advance" button until the oval on the LCD Screen is empty to begin in Beginners mode. Set the Throttle Limit Control Knob to "V1" or 50% power. Next start the left joystick at the (1) bottom then move it all the way to the (2) top then back to the (3) bottom. The remote control is now connected to the Drone. If you slowly move the left joystick up the blades will begin to spin. Practice using the remote to familiarize yourself with the controls before flying the drone.

****To bind the remote control to the drone set the drone on the ground, it must remain motionless to calibrate the gyro. Then follow steps (1) (2) (3)**



SCAN FOR MORE INFORMATION,
VIDEOS, QUICKSTART GUIDE

****Troubleshooting binding the remote control:** Since the drone landing gear is detached while the drone is installed we recommend holding the drone perfectly level and still for 5 seconds prior to binding the remote control. Or rest the arms of the drone on a chair or table while you bind the remote control.